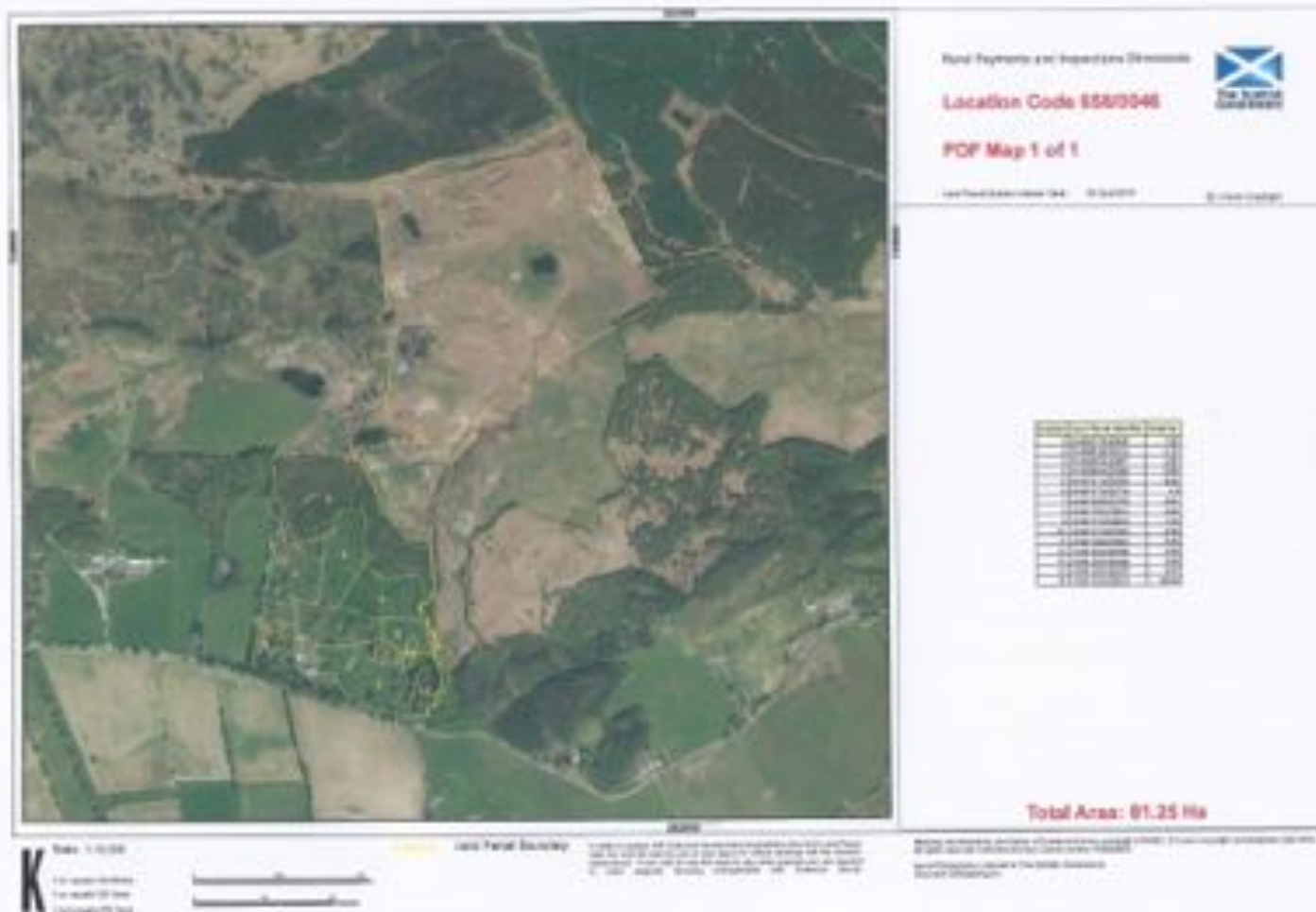


Welcome to Clathric

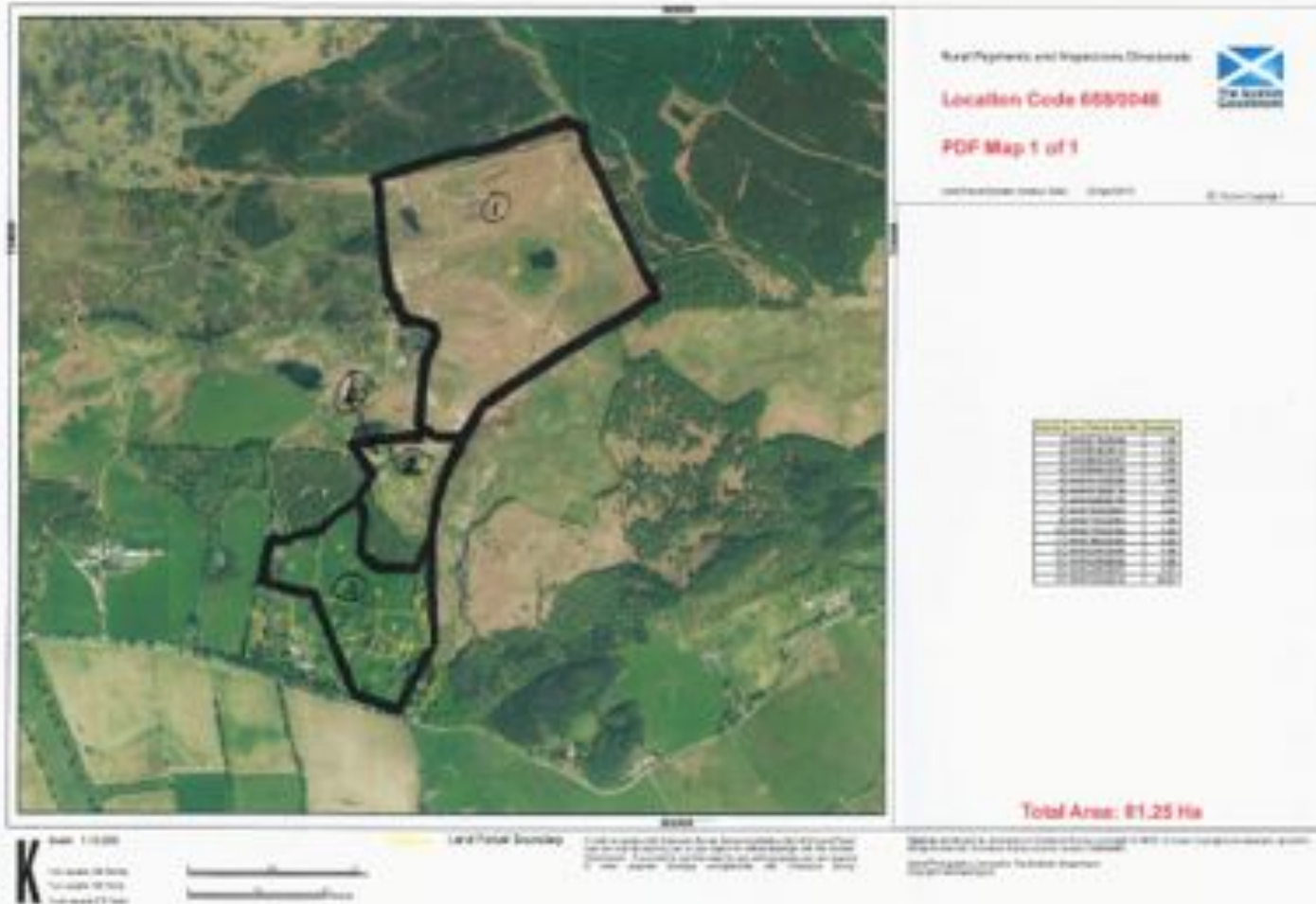
Clathic

- ▶ Our Family Home since 2003
- ▶ 210 Acres
 - ▶ 110 acres hill
 - ▶ 75 acres good park type pasture
 - ▶ 20 trees
 - ▶ 5 garden

What it was like



The Plan





Clathic Today







Where did the stock come from

- ▶ Sept 2011 - Auchnabobayne - 33 mixed stock
- ▶ Sept 2011 - Strathdon Deer - Stag (“Henry”)
- ▶ Feb 2012 - Capture - 26 mixed
- ▶ 2012 -12 - Calves
- ▶ Sept 2012 - Strathdon Deer- 8 Hinds
- ▶ Feb 2013 - Capture - 41 mixed
- ▶ 2013 - 41 Calves
- ▶ Feb 2014 - Woburn Park - 19 Hinds (1 died 13 calved (11 stags, 2 hinds))
- ▶ Sept 2014 - Woburn Park - Stag (“Harold”)
- ▶ 2014 - 66 Calves
- ▶ 2015 - 60+ calves

Today's Stock

- ▶ 13 Stags
- ▶ 28 Yearling Stags
- ▶ 101 Hinds
- ▶ 23 Yearling Hinds
- ▶ 65+ Calves

- ▶ 230 Deer

What we do next

- ▶ Tag calves
- ▶ Treat all calves for worms / warble
- ▶ Cull yearling stags + left overs from last year
- ▶ Ween calves from adults
- ▶ Possible live sale of hinds / calves
- ▶ 2016 live sale of 2014 stags
- ▶ Rut
- ▶ Winter feed



Culling

- ▶ At present all done in field
- ▶ Beasts are not herded onto trucks
- ▶ Beasts unstressed shot through the head
- ▶ All beasts into our larder facility in 30 mins - 1 hour
- ▶ Hanging in the chill having been dealt with within an hour of arriving
- ▶ Will look at the new abattoir in Fife to see if it is a good option

Markets

- ▶ Highland Game
- ▶ Own marketing
 - ▶ Butchery done by local butcher
 - ▶ Delight Delicatessen
 - ▶ Farmers markets
 - ▶ Emails to friends, family and any one who has expressed an interest
 - ▶ Local restaurants
- ▶ The future
 - ▶ Bob Prentices new abattoir
 - ▶ Delight Delicatessen - my new delicatessen business

Conclusion

- ▶ The deer enterprise is now a net contributor
- ▶ Runs within original capabilities
- ▶ Ground improved beyond all recognition / on going annual battle
- ▶ SFP / LFAS