

REPRODUCTIVE CONTROL & PROFITABILITY



Main goals of this talk:

1st, Don't be boring



3rd, Cooperation with farmers to improve venison business



2nd, Give you interesting info



How to make profitable your deer farm??





Some important aspects to take in account:

1. Pastures and extra feeding.
2. Health status and welfare
3. Genetic
4. Production
5. Increase value of venison.

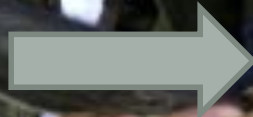
I.- Pastures and extra feeding



\$\$\$\$\$????

II.- Health status & Welfare

- 1st. Good feeding
- 2nd. Low stress
- 3rd. Diseases free



TB & JONHE'S





WELFARE

Wa

**GREAT
HANDLING
PRACTICES**



II.- Genetic : antler and/or venison





4 yrs



3 yrs

2 yrs



I come from a high family
and also was born before
him.

Why are you
so big??

August 18th, 2014



IV.- Production



Main points IN PRODUCTION:



• 1.- PREGNANCY RATE

- ENERGY-PROTEIN BALANCE
- AGE OF THE HIND
- MALE (Fertility, size of mating groups, etc)

• 2.- EARLY CALVING

- GOOD FEEDING
- GOOD BODY CONDITION
- EARLY MATING SEASON
- SINCRONIZATION AND MELATONIN

• 3.- WEANING RATE

- DEATH AT CALVING (5-20%)
- IF YOUR FARM PRODUCE LESS THAN 85% WEANING, BE WORRY









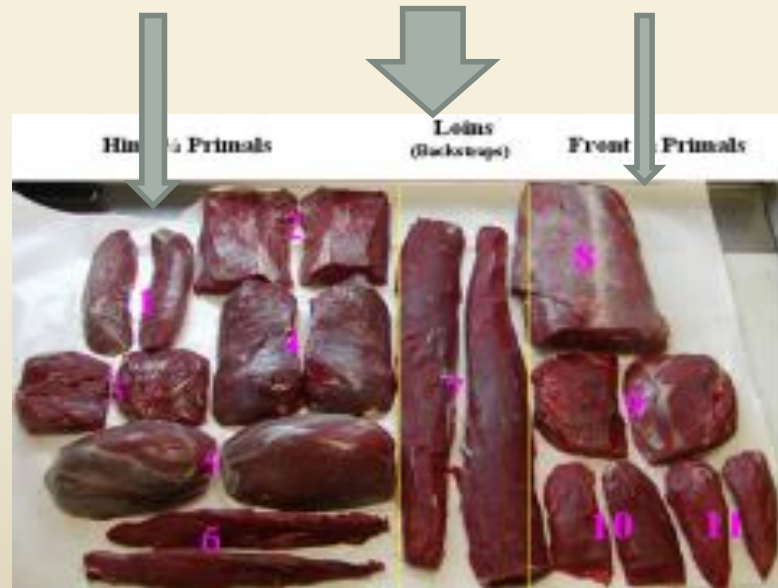


V.- INCREASE VALUE OF VENISON

- VERY FEW FARMS IN UK PRODUCE VENISON CARCASSES CLASIFIED “E” or “U” BY THE CONFORMATION CLASS IN THE “EUROP” SYSTEM



- INCREASE VALUE OF DIFFERENT PARTS OF CARCASS



SUMMARY :

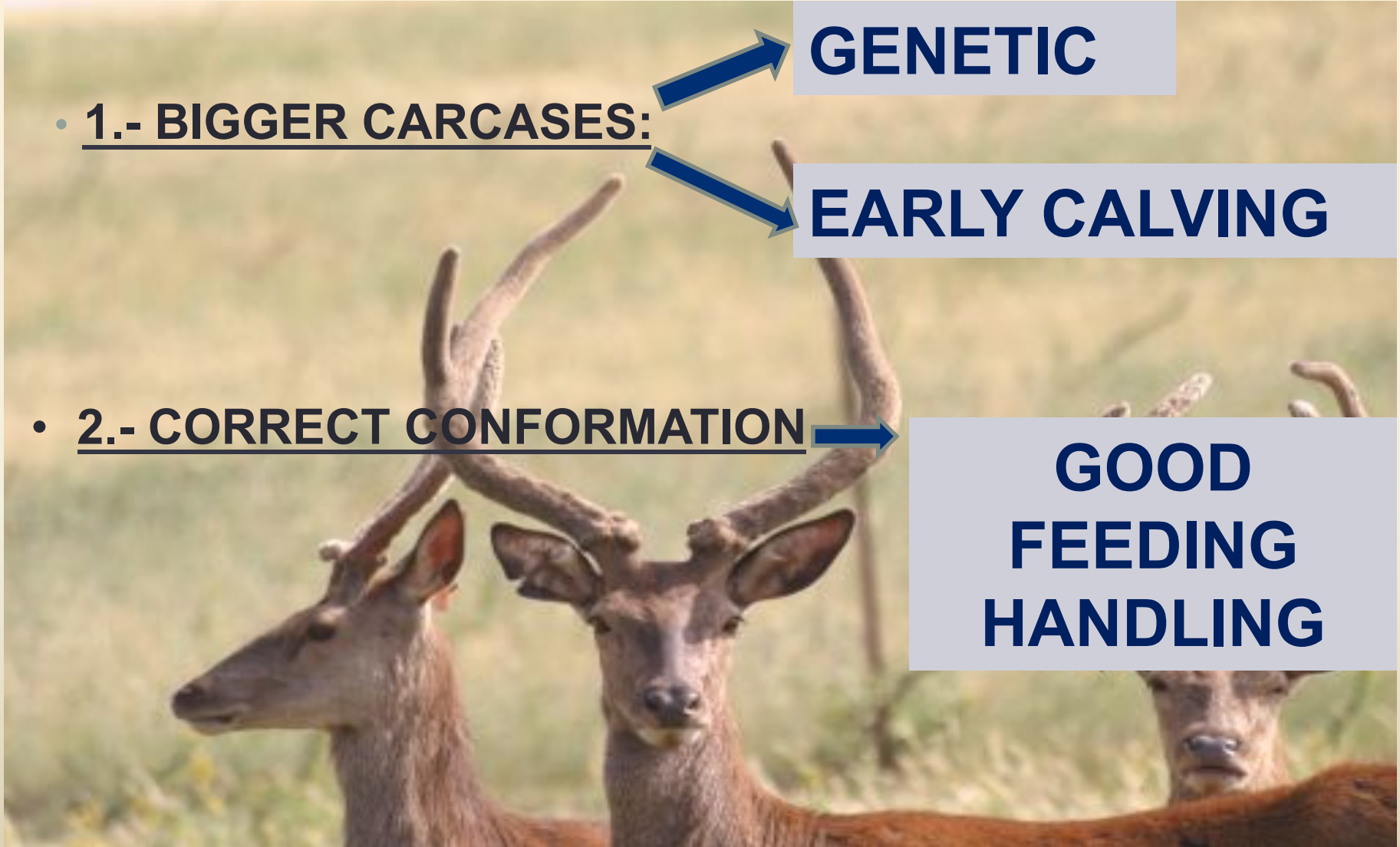
- 1.- BIGGER CARCASSES:

GENETIC

EARLY CALVING

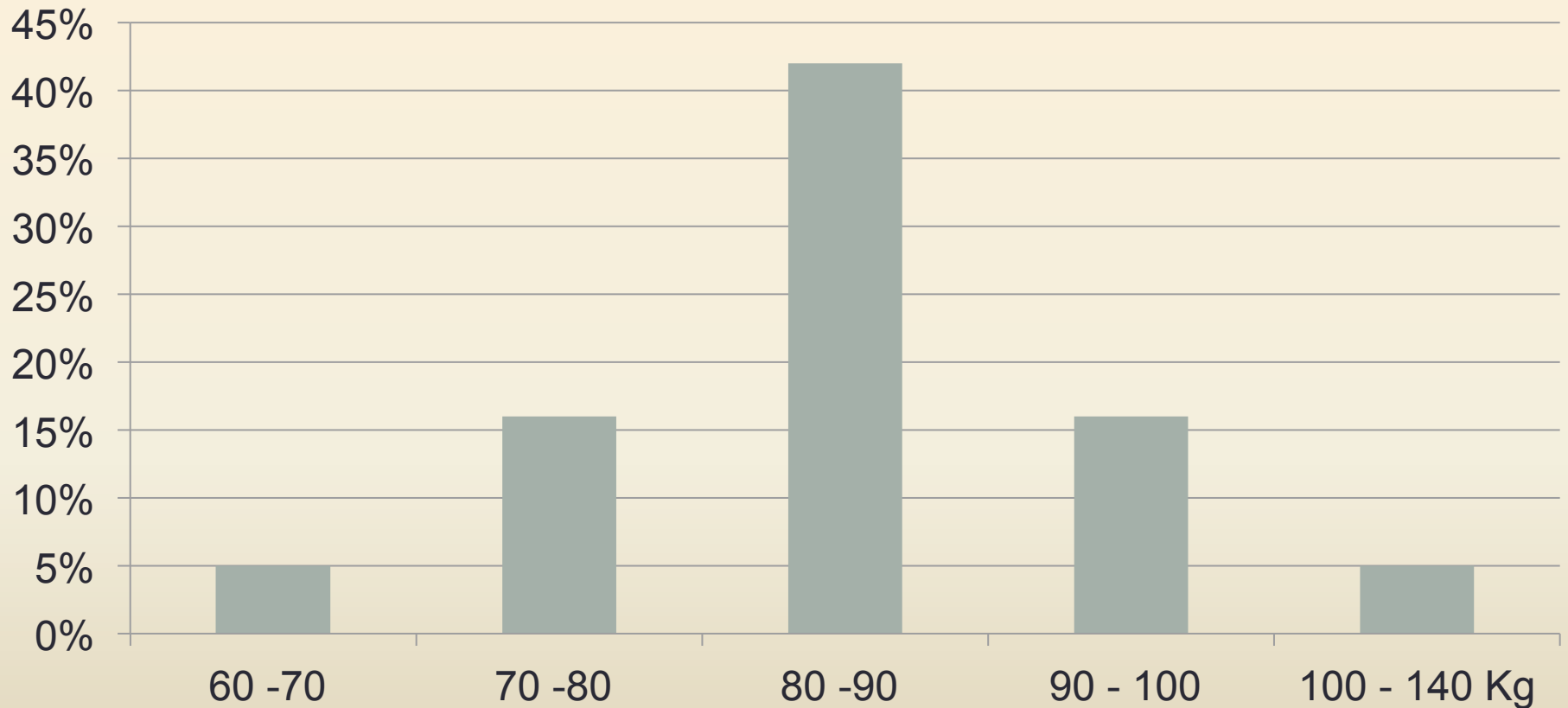
- 2.- CORRECT CONFORMATION

**GOOD
FEEDING
HANDLING**



GENETIC SELECTION IN BODY SIZE

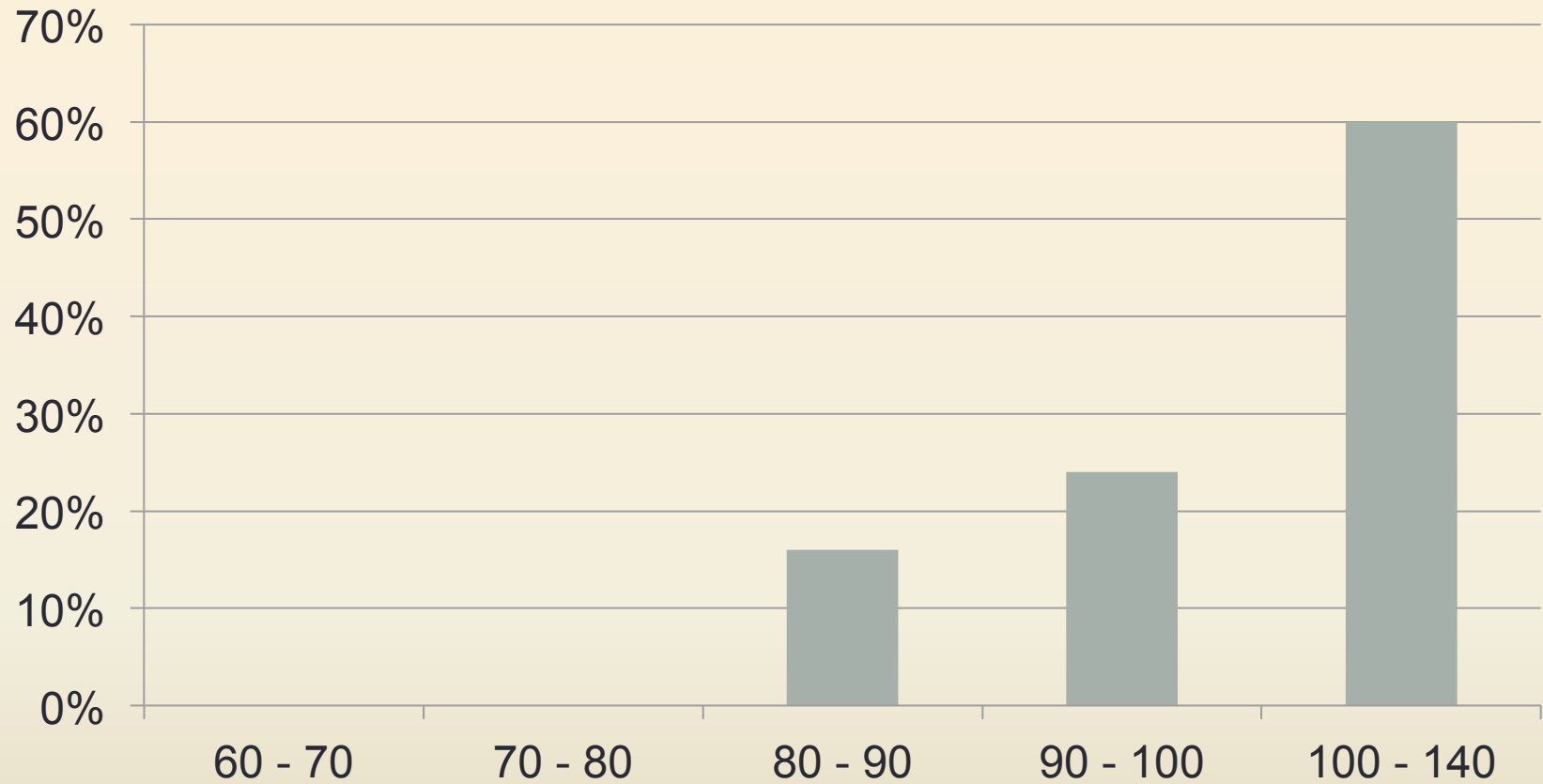
BODY WEIGHT OF YEARLING HINDS IN 2000



Smallest 63 Kg

Biggest 118 kg

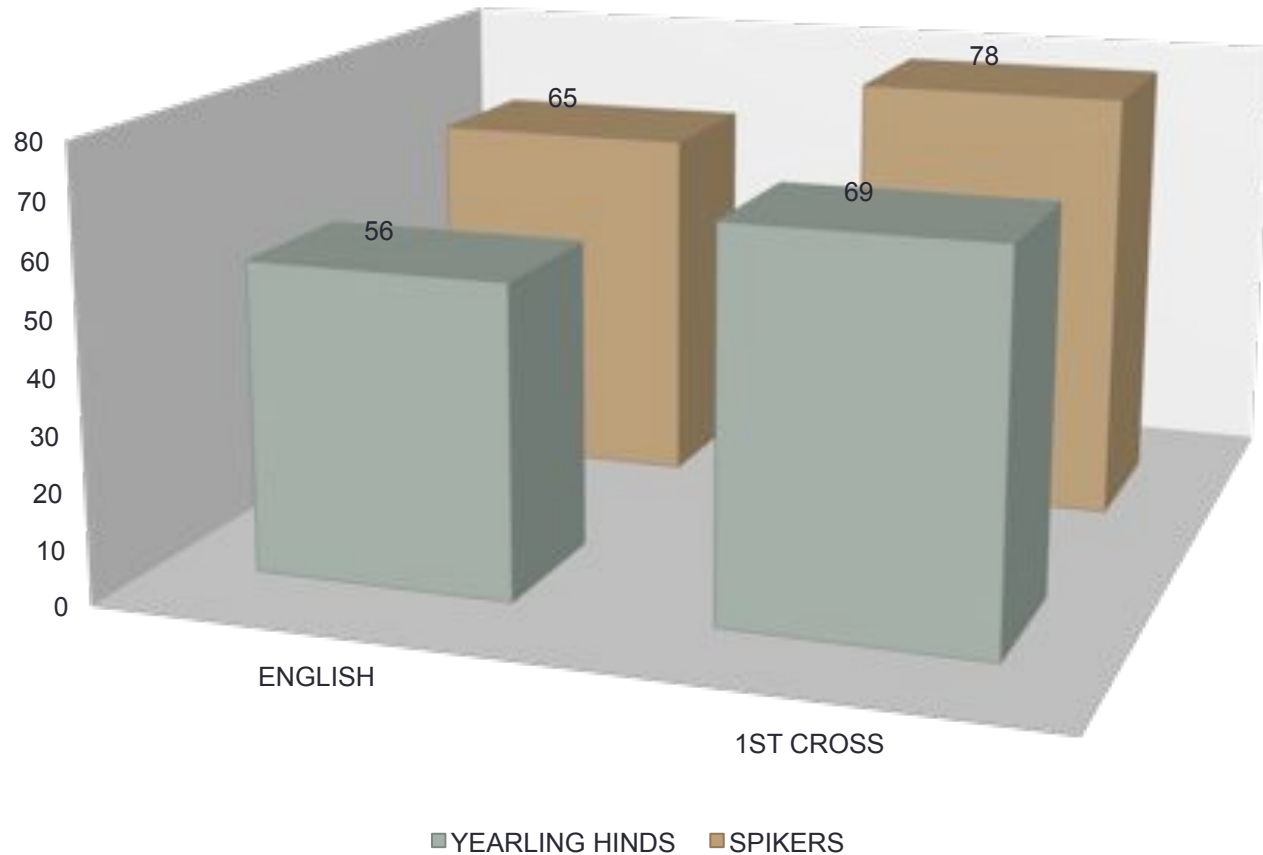
BODY WEIGHT OF YEARLING HINDS IN 2014



Smallest 80 kg



Biggest 140 kg

CARCASS WEIGHTS OF FIRST CROSS PROGENY UP TO 20% MORE THAN ENGLISH

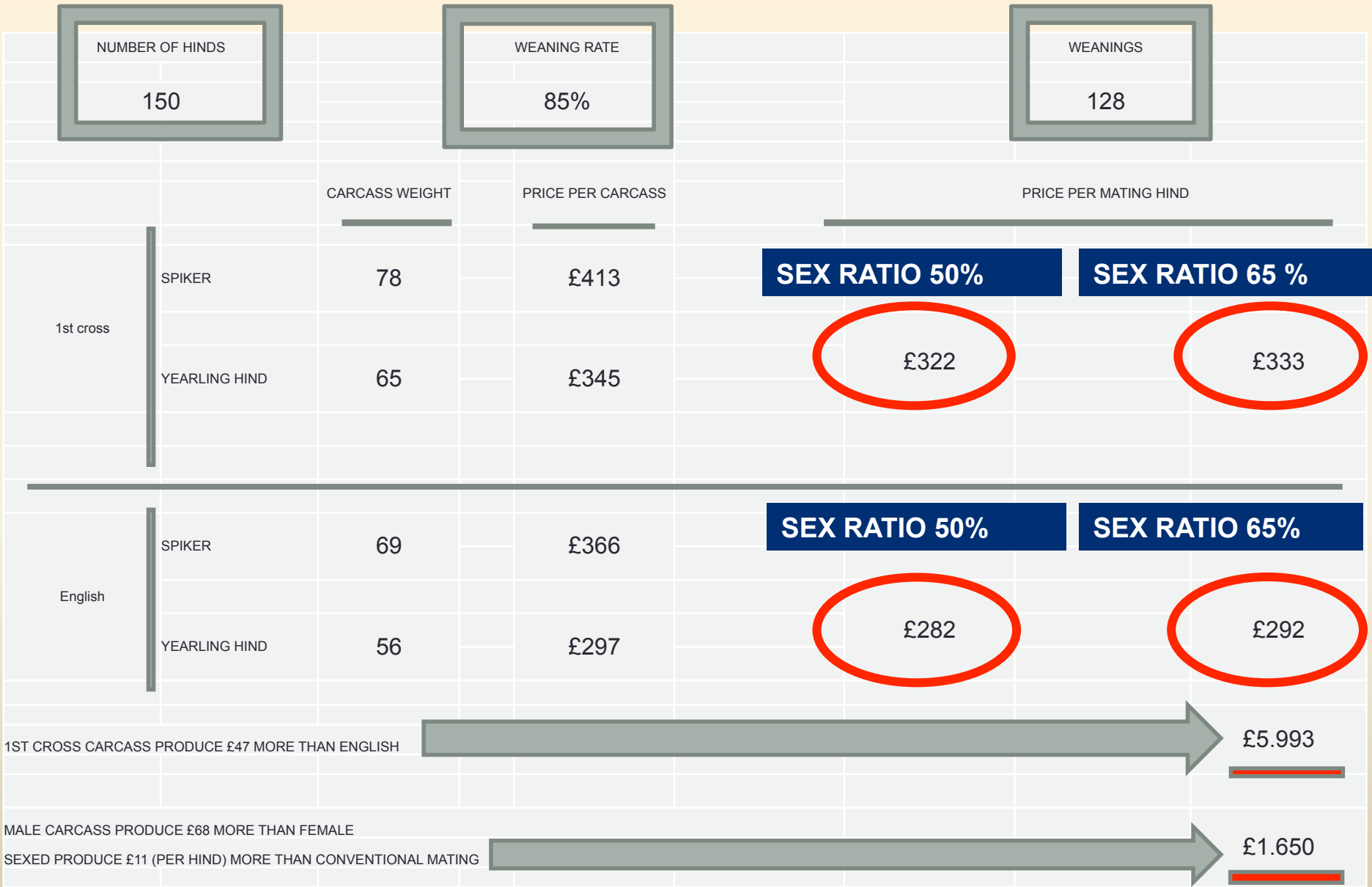


ADVANTAGE OF HIBRID VIGOUR ESPECIALLY WEIGHT GAIN

GENETIC IMPROVEMENTS IN BODY SIZE

	Spikers			Yearling hinds	
	Biggest	Average		Biggest	Average
<u>2010</u>	161 KG	115 kg		118 KG	85 kg
					
<u>2014</u>	160 KG	128 kg		123 KG	96 kg
weight	biggest	average		biggest	average

FINANTIAL IMPLICATIONS



PROBLEMS IN PRODUCTION??

**150 Hinds X 80% =
120 Weanings = £ 45,480**

**150 Hinds X 85% =
128 Weanings = £ 48,512**

**150 Hinds X 90% =
135 Weanings = £ 51,199**

+ £ 3,000

+ £ 3,000

SOME TOOLS AVAILABLE



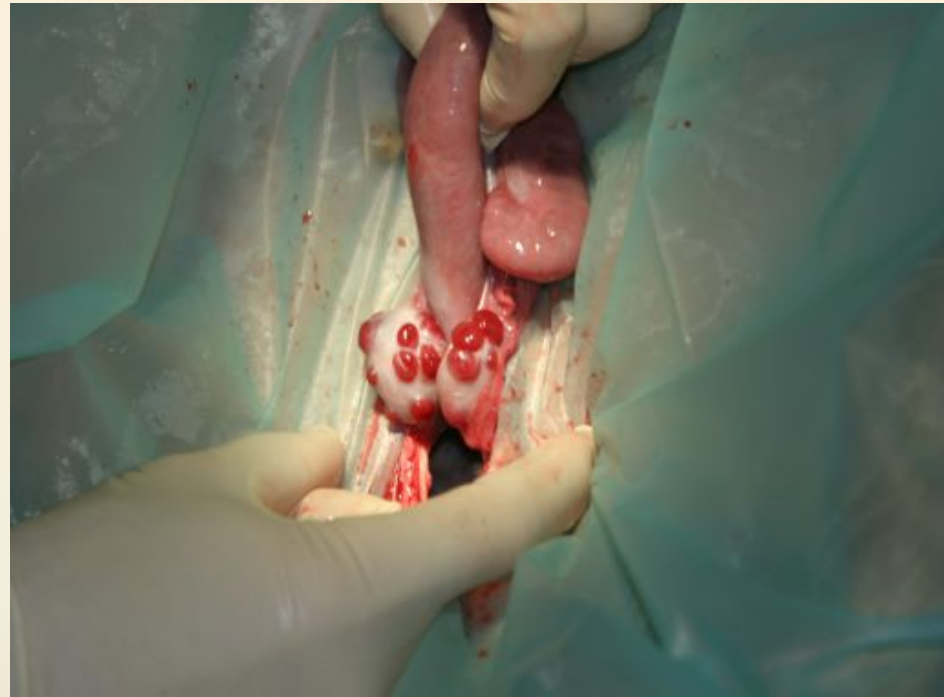
SEMEN COLLECTION

SOME TOOLS AVAILABLE



A.I. (Artificial Insemination)

SOME TOOLS AVAILABLE



E.T. (Embryo Transfer)

SOME TOOLS AVAILABLE



SCANNING

ADVANTAGES OF REPRODUCTIVE TECHNIQUES

A circular microscopic view of several sperm cells, which are small, oval-shaped structures with a darker nucleus and a lighter cytoplasm, scattered across a light gray background.

**PRESERVATION OF THE VERY
BEST GENETIC**

AVOID DISEASES TRANSMITING

**SELL SEMEN KEEPING YOUR
STAGS**

**USE OF HIGH SELECTED GENETIC FROM FARMS FAR AWAY IN
THE SAME COUNTRY OR OVERSEAS**

USE ONE STAG OVER LARGE NUMBER OF HINDS

**SPREAD GENETIC FROM HIGH
SELECTED HINDS**

DIFFERENT HANDLING FOR EMPTY HINDS

USE OF SEMEN FROM THE WILD INTO FARMS FREE OF DISEASES



FACILITIES FOR SEMEN COLLECTION



POOR FACILITIES = RISKY AND
DIFFICULT COLLECTION



GOOD FACILITIES = EASY, GOOD
SEMEN, AND SAFE FOR THE STAG
AND PEOPLE.

POOR FACILITIES FOR A.I.



IMMOBILIZATION



A.I. ON THE FLOOR

**BAD RESULTS,
EXPENSIVE**

GOOD FACILITIES FOR A.I.



**MUCH BETTER
RESULTS, CHEAP**



**THANK YOU SO MUCH FOR YOUR
ATTENTION**



Thanks for always being there



Oh Deer!!,

These amazing creatures conect me with great people and let me live in a deeper way.



I am absolutely fascinated with them.