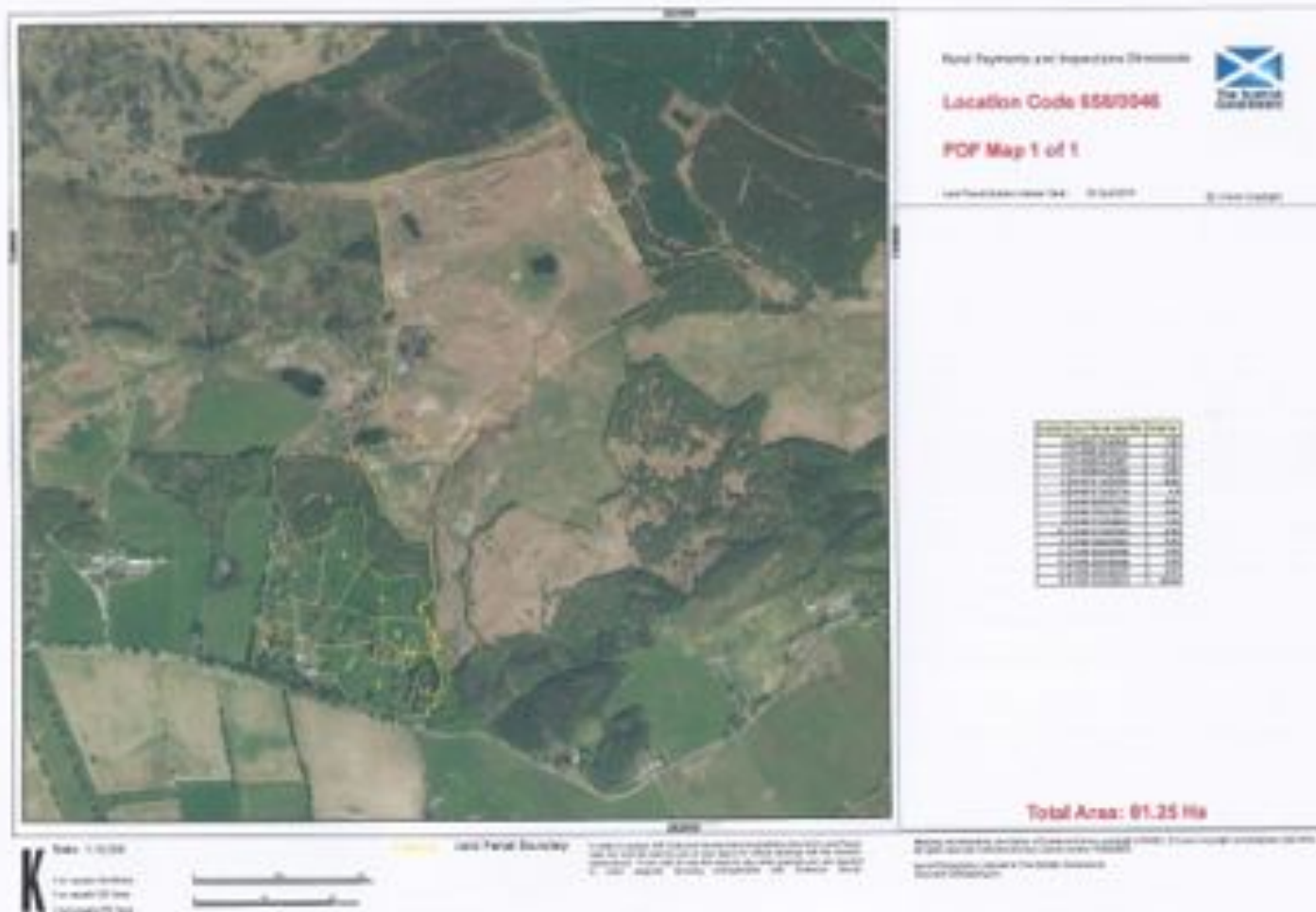


Welcome to Clathric

Clathic

- ▶ Our Family Home since 2003
- ▶ 210 Acres
 - ▶ 110 acres hill
 - ▶ 75 acres good park type pasture
 - ▶ 20 trees
 - ▶ 5 garden

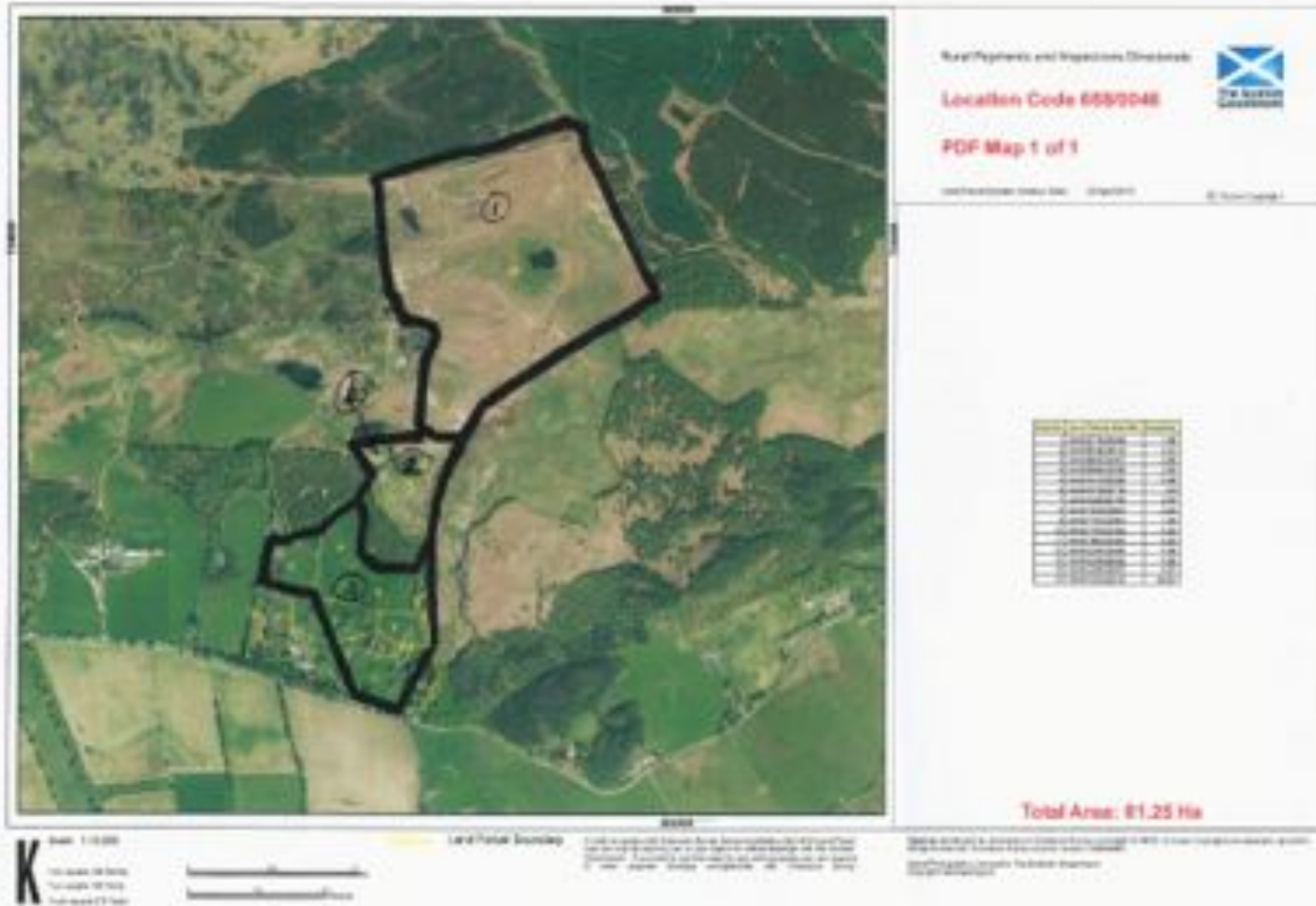
What it was like



The Plan

- ▶ What can we do to improve the ground?
- ▶ What is needed?
 - ▶ A degree of land responsibility overruled commercial logic at outset
- ▶ The long term plan needed to be self sustaining
- ▶ It had to be done within existing capabilities
- ▶ Our 210 acres should contribute rather than cost
- ▶ Let deer be deer
- ▶ I do not like sheep!!

The Plan



Bracken Control

- ▶ Spraying
- ▶ crushing
- ▶ Stocking
- ▶ Feeding tatties to the right places





Clathic Today







Where did the stock come from

- ▶ Sept 2011 - Auchnabobayne - 33 mixed stock
- ▶ Sept 2011 - Strathdon Deer - Stag (“Henry”)
- ▶ Feb 2012 - Capture - 26 mixed
- ▶ 2012 -12 - Calves
- ▶ Sept 2012 - Strathdon Deer- 8 Hinds
- ▶ Feb 2013 - Capture - 41 mixed
- ▶ 2013 - 41 Calves
- ▶ Feb 2014 - Woburn Park - 19 Hinds (1 died 13 calved (11 stags, 2 hinds))
- ▶ Sept 2014 - Woburn Park - Stag (“Harold”)
- ▶ 2014 - 66 Calves

Today's Stock

- ▶ 4 Stags
- ▶ 9 Yearling Stags
- ▶ 81 Hinds
- ▶ 21 Yearling Hinds
- ▶ 53 Calves

Our Management

- ▶ Field Management
- ▶ Feeding
- ▶ Tagging
- ▶ Culling

Let deer be deer











Conclusion

- ▶ The deer enterprise is now a net contributor
- ▶ Runs within original capabilities
- ▶ Ground improved beyond all recognition
- ▶ SFP / LFAS